

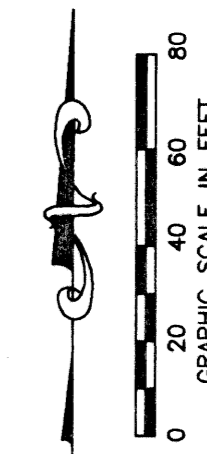
JOURNEY'S END PLAT TWO

PART OF SMITH DAIRY EAST P.U.D.
BEING A PORTION OF SECTION 3, TOWNSHIP 45 SOUTH, RANGE 42 EAST
TOGETHER WITH A REPLAT OF A PORTION OF BLOCK 39,
PALM BEACH FARMS COMPANY, PLAT NO. 3,
PLAT BOOK 2, PAGES 45 THROUGH 54
SITUATE IN SECTIONS 3, TOWNSHIP 45 SOUTH, RANGE 42 EAST
PALM BEACH COUNTY, FLORIDA
FEBRUARY, 1999 SHEET 6 OF 12

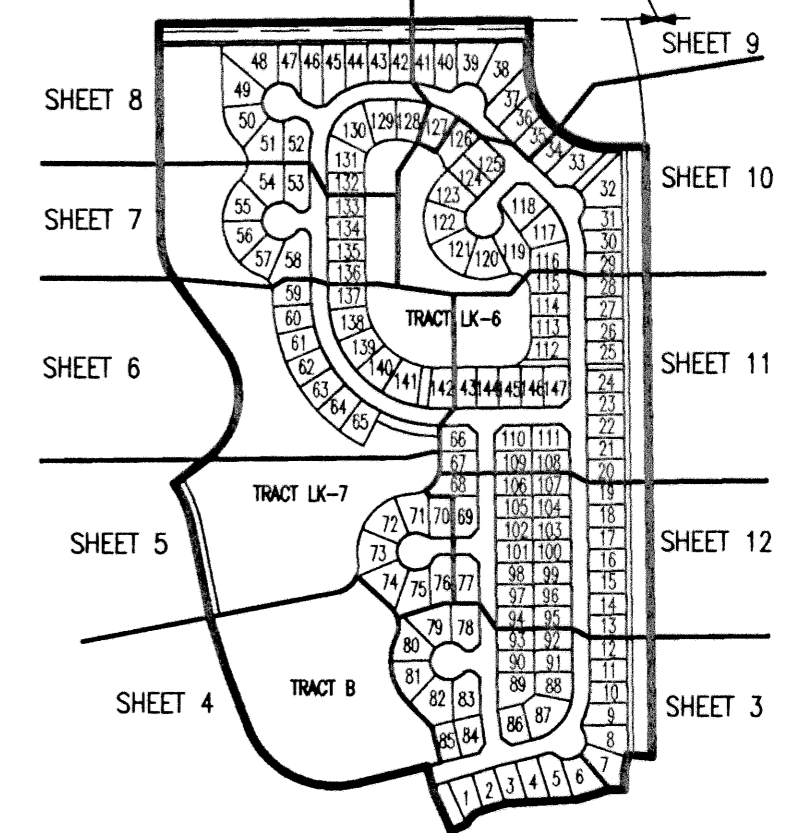
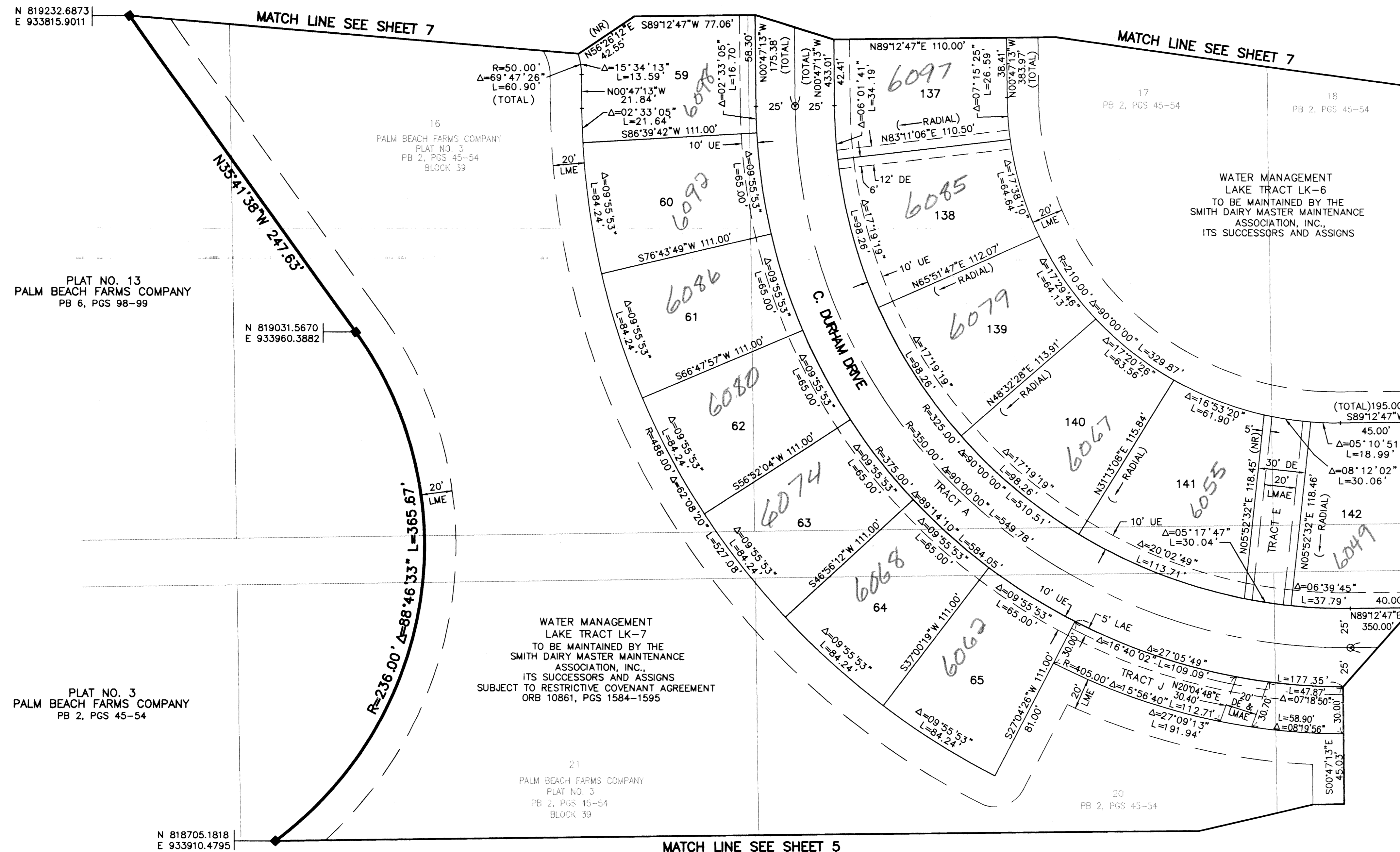
0677-006

57

STATE OF FLORIDA
COUNTY OF PALM BEACH
THIS PLAT WAS FILED FOR
RECORD _____ DAY OF _____
AD, 1999 AND DULY RECORDED
IN PLAT BOOK _____ ON PAGES
_____ AND _____
DOROTHY H. WILKEN, CLERK
BY: _____, D.C.



CIRCUIT COURT SEAL



- LEGEND**
- L ARC LENGTH
 - AE ACCESS EASEMENT
 - BE BUFFER EASEMENT
 - Δ CENTRAL (DELTA) ANGLE
 - CH CHORD
 - DE DRAINAGE EASEMENT
 - LAE LIMITED ACCESS EASEMENT
 - LMAE LAKE MAINTENANCE EASEMENT
 - PUD PLANNED UNIT OF DEVELOPMENT
 - (NR) NON-RADIAL
 - ORB OFFICIAL RECORD BOOK
 - PB PLAT BOOK
 - PG(S) PAGE(S)
 - R RADIAL
 - (TYP) TYPICAL
 - UE UTILITY EASEMENT
 - PERMANENT REFERENCE MONUMENT
 - SET LB-048
 - PERMANENT CONTROL POINT
 - SET LB-048
 - ⊕ CENTERLINE

SUBDIVISION: Journey's End Plat 2
BOOK: 05
PAGE: 57
FLOOD MAP: 170A
QUAD: 34
ZONING: PUD-SE
SE: 06-100AT
TIAZ: 012
PUD NAME: Smith Dairy East

K:\west\westsm-a\dwg\SM_ARPOS.dwg 06/17/99 05:02:25 PM EDT

REV.: 06-17-99
CAD FILE:
WESTSM_A\SM_ARPOS

THIS INSTRUMENT WAS PREPARED BY DAVID L. SMITH, P.S.M. IN THE OFFICES OF MOCK, ROOS & ASSOCIATES, INC., 5720 CORPORATE WAY, WEST PALM BEACH, FLORIDA 33407.

SCALE:
1" = 40'
P.A. NO.:
98082.53
DATE:
FEBRUARY 1999
DRAWING NO.
45-42-03-68

MOCK • ROOS
ENGINEERS • SURVEYORS • PLANNERS
5720 Corporate Way, West Palm Beach, Florida 33407
(561) 683-3113, fax 478-7248

JOURNEY'S END PLAT TWO
PART OF SMITH DAIRY EAST P.U.D. BEING A PORTION OF SECTION 3, TOWNSHIP 45 SOUTH, RANGE 42 EAST, TOGETHER WITH A REPLAT OF A PORTION OF BLOCK 39, PALM BEACH FARMS COMPANY, PLAT NO. 3, PLAT BOOK 2, PAGES 45 THROUGH 54 SECTION 3, TOWNSHIP 45 SOUTH, RANGE 42 EAST PALM BEACH COUNTY, FLORIDA

SHEET 6 OF 12